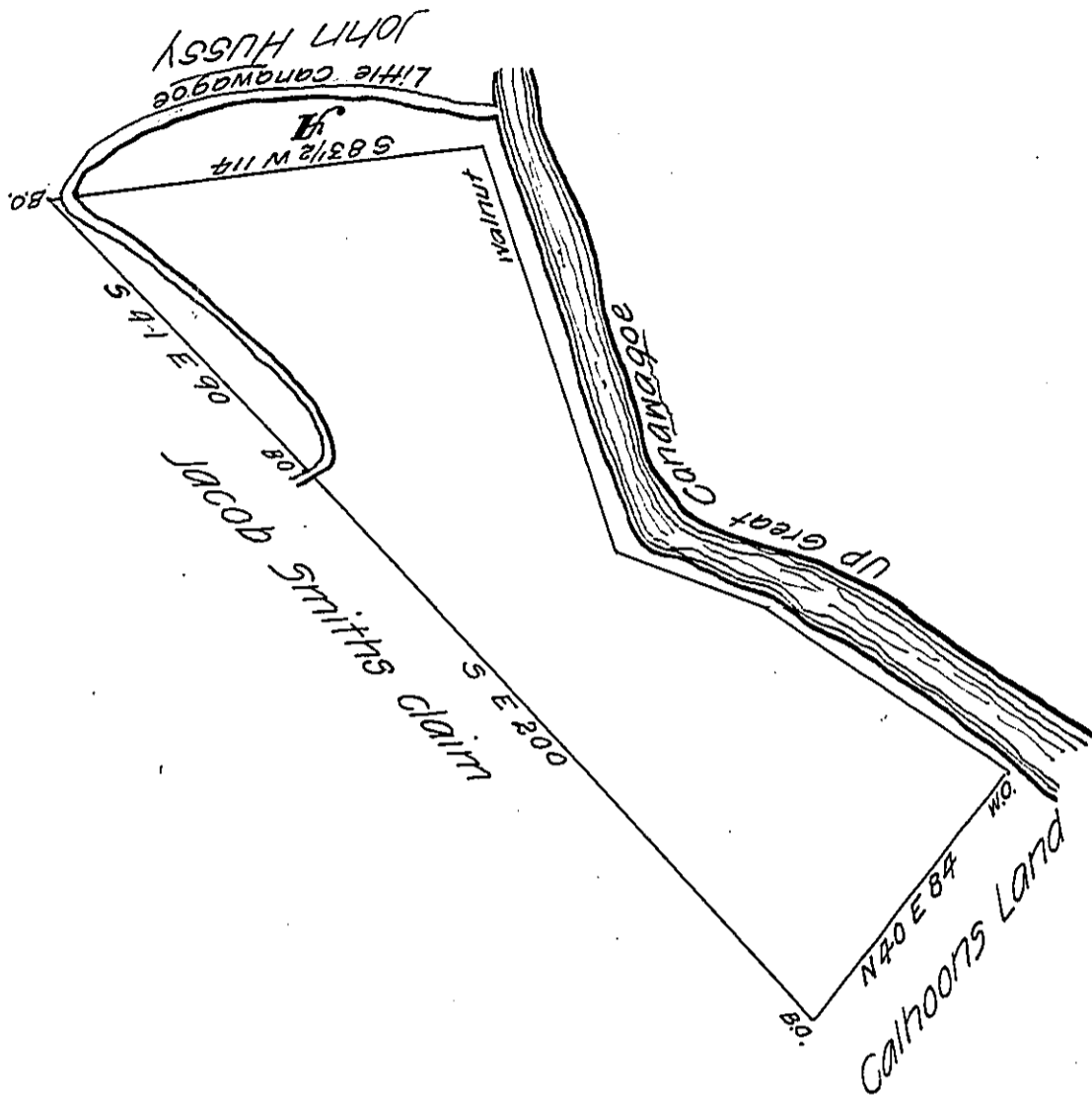


Dear Sir

York Town Feb 17th 1786

228

The inclosed draught was surveyed on the 7th day of May 1770 by Mr Charles Lukens and returned into the Surveyor Generals - as appears by his rough draught in my hands this is the copy of his draught



The piece ~~is~~ was left out of the above draught by Mr Lukens altho' he mentions that the Little Canawagoe Creek is the boundry between John Hussy & John Jones I was obliged to go to the ground and find that the creek was always considered as the boundary line some other incorrect lines as you will see by comparing the above draught with the inclosed a great deal of pains is taken to put this to rights but I submit the whole to your Judgment in the premisses and am with esteem your obliged hum^{ble}

Ser.^t John Forsyth

The owner wants to patent the land and I will venture to say the inclosed draught is right and therein all errors is rectified.

IN TESTIMONY that the above is a copy of the original remaining on file in the Department of Internal Affairs of Pennsylvania, made conformably to an Act of Assembly approved the 16th day of February, 1833, I have hereunto set my Hand and caused the Seal of said Department to be affixed at Harrisburg, this twenty ninth day of August 1906

Geo. R. Brown
Secretary of Internal Affairs.